

SBS Manager Suite

Simplified Intelligence



powered by



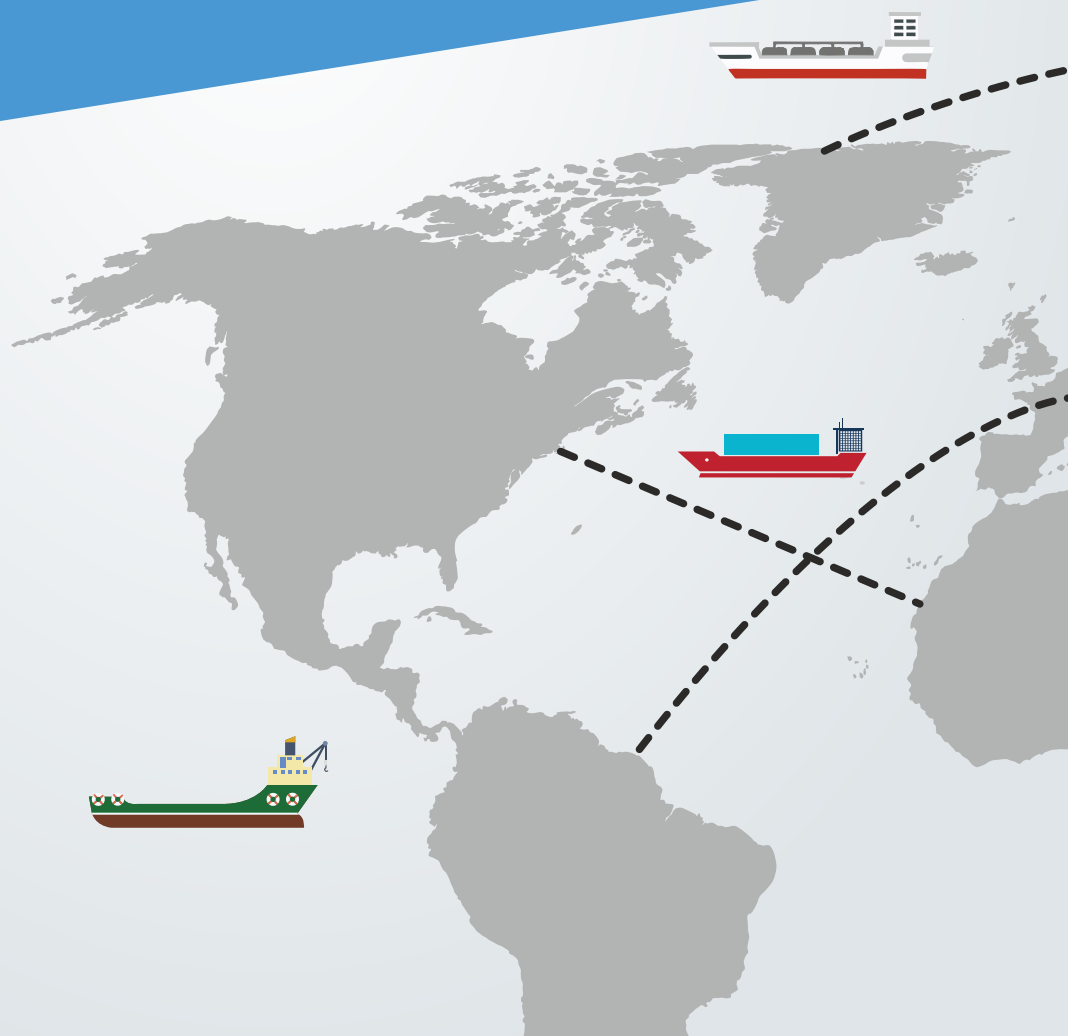
Meet the BOSS

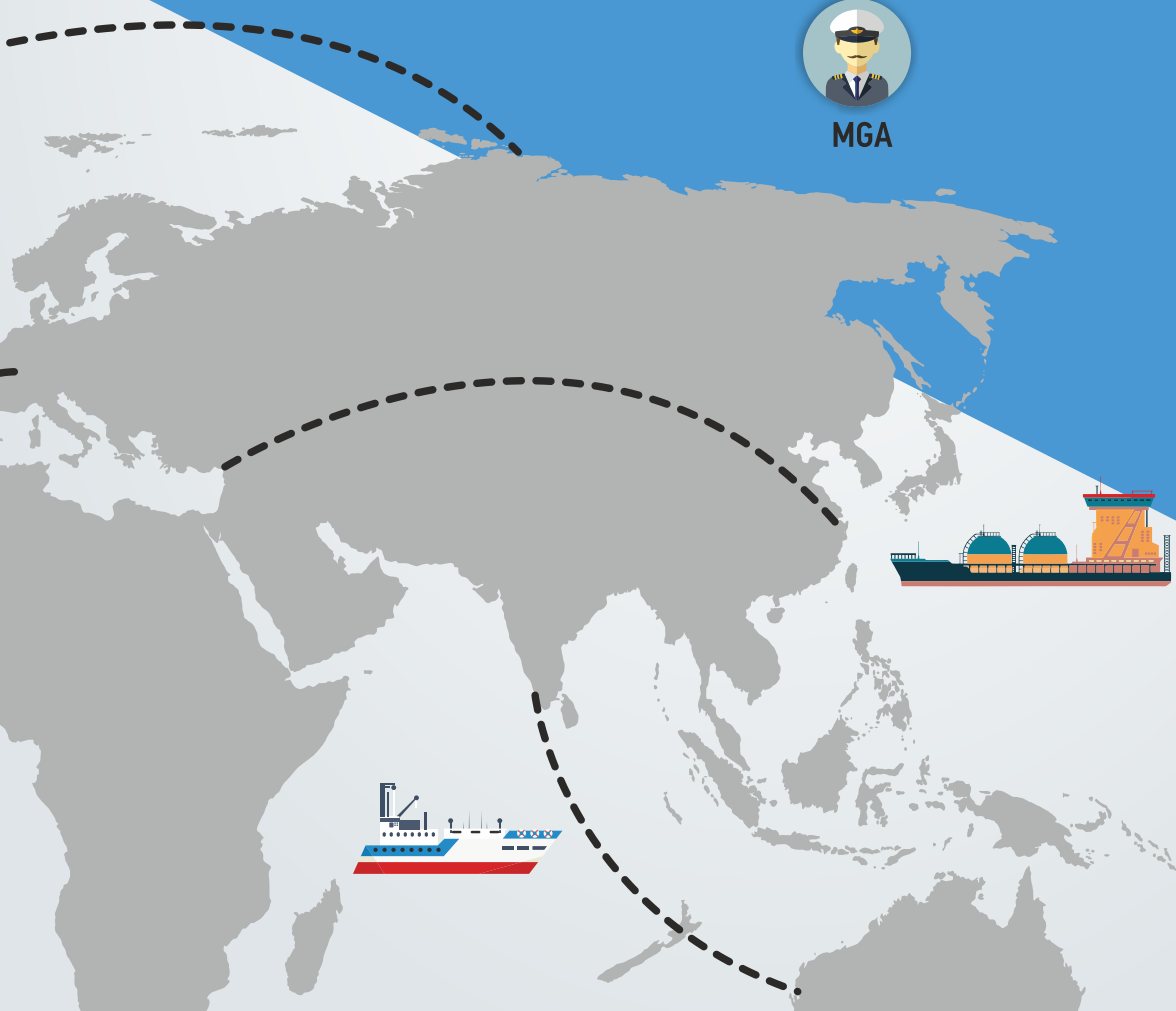
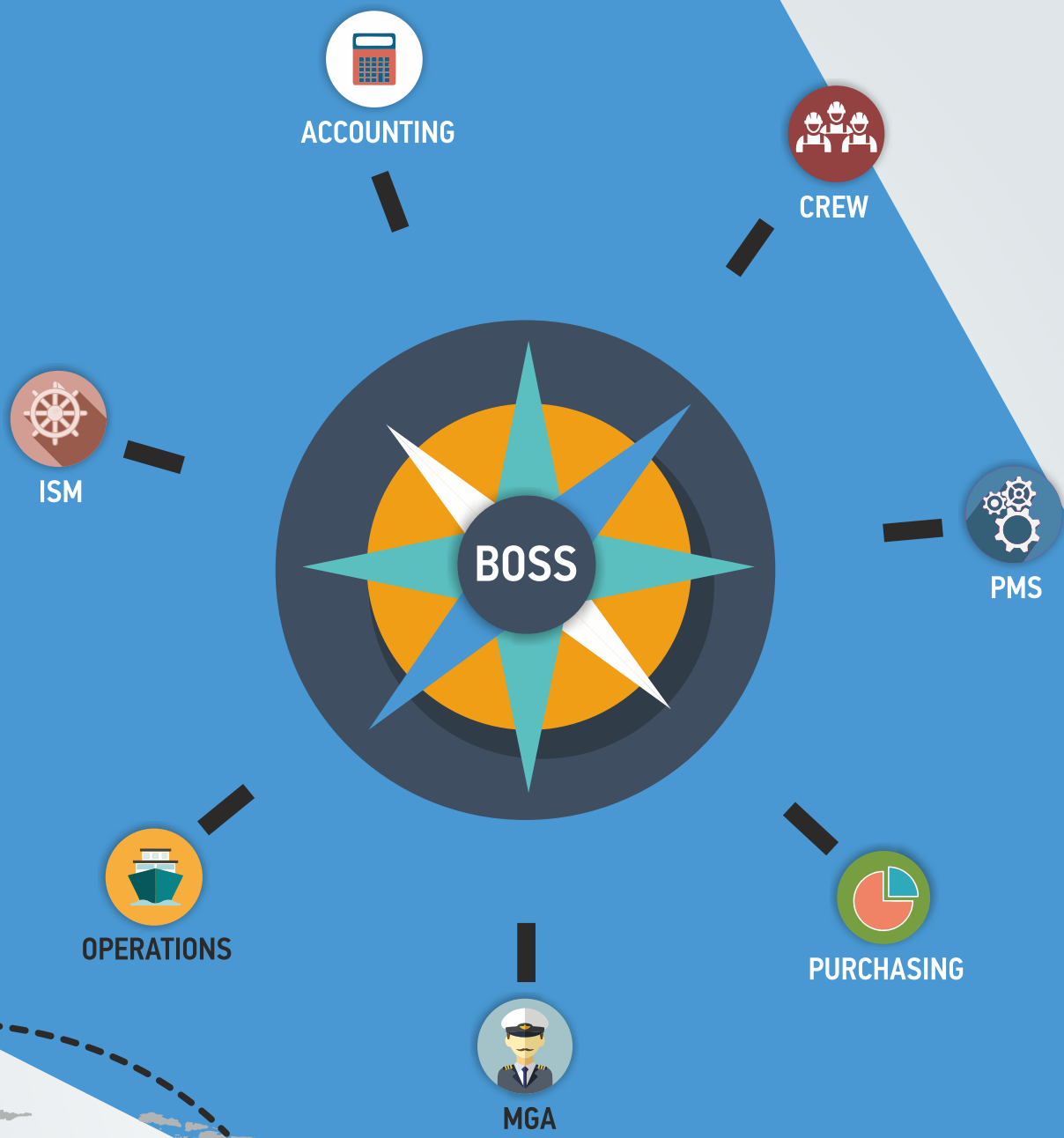
**that helps you maximize your potential,
in full compliance with ISO high-quality
standards.**

I2QS's SBS Manager Suite is based on the innovative BOSS platform (Business Operating Software System). BOSS is an open architecture platform based on ISO 9001 standards. BOSS incorporates all the benefits that an intelligent Management System offers; through the deployment of a smart grid, users are able to rely on a future proof design with a friendly user interface.

BOSS allows each user to manage electronic databases and derive live detailed information on the company's Management System at the touch of a button. Key performance indicators, active calendars, dashboard, form designer and many other useful tools have never been so readily accessible!

By using SBS Manager Suite our customers have the opportunity to organize, identify and interact with the company's procedures, to produce the desired outcome. The advantage of this approach is an ongoing control of your company's organization, resulting in better performance and continuous improvement based on objective measurements.





BOSS Architecture

SBS Manager Suite features a great flexibility, user-friendly menus and a search engine, as well as statistical analysis results, for the following:

- Organization Structure (Departments, positions, procedures, business targets, documentation, etc.)
- Human Resources (Candidates, staff, training, drills, etc.);
- Vendors and Customers Management
- System and Equipment Management.

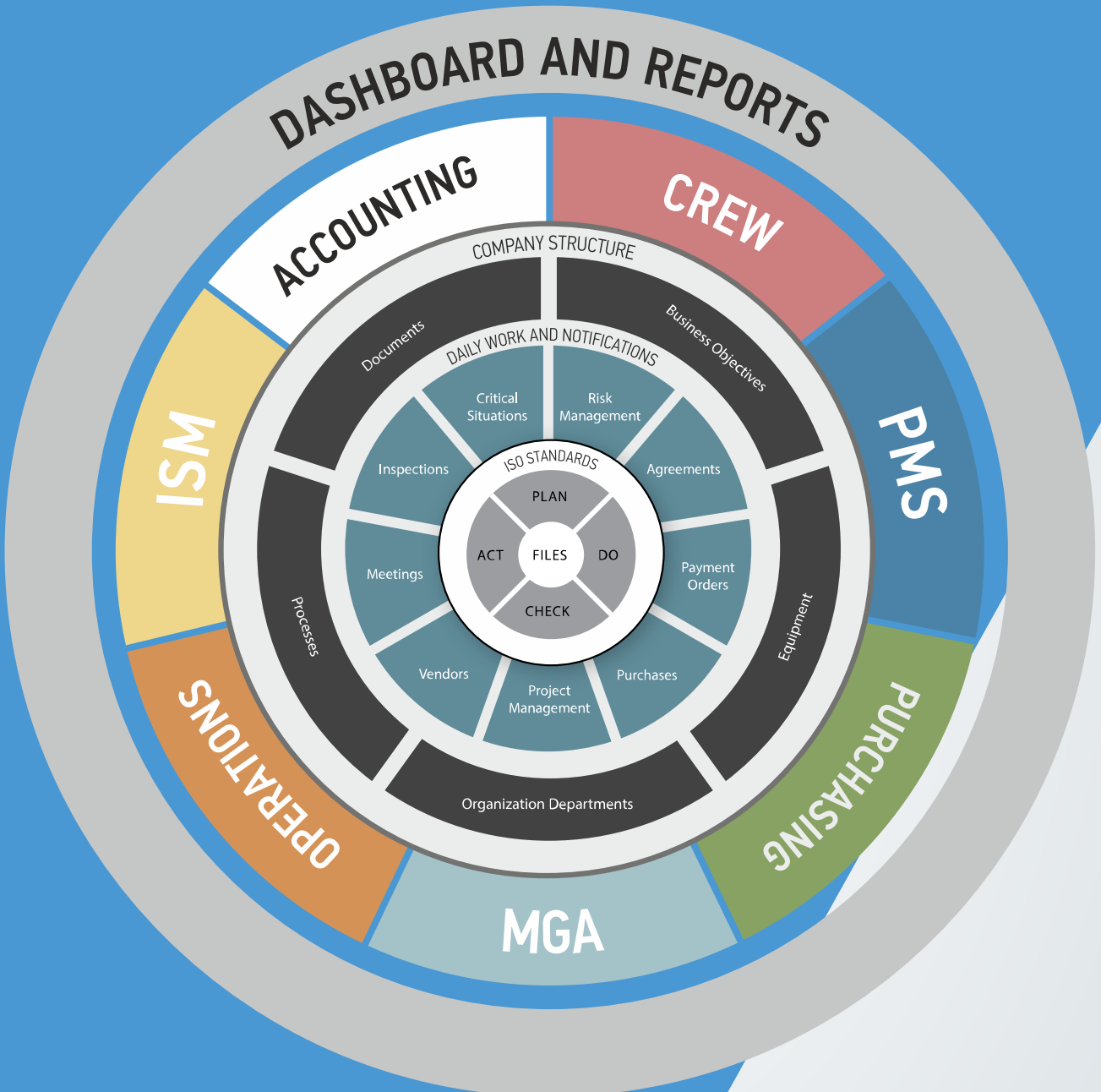
In addition, the BOSS platform provides the following tools:

- Mission Critical Events Monitoring
- System Monitoring
- Risk Assessment
- Meetings Scheduler/Reminder (Mission Critical Events) and provision of further preventive & corrective actions
- Budget Monitoring System
- Project Management
- Contract Filing Management

The SBS Manager Suite is the only customized business management suite in the market for the administration of the organization's files and records, ensuring the organization's procedures optimization, the optimum security and an excellent customer experience.

The SBS Manager Suite emerges as the most flexible and reliable tool for all Quality Department Managers, providing:

- Fast and full monitoring of the applied Quality Management System
- System distribution and control by department





ISM MANAGER

Control any operational risks and significantly improve the safety of your vessels.

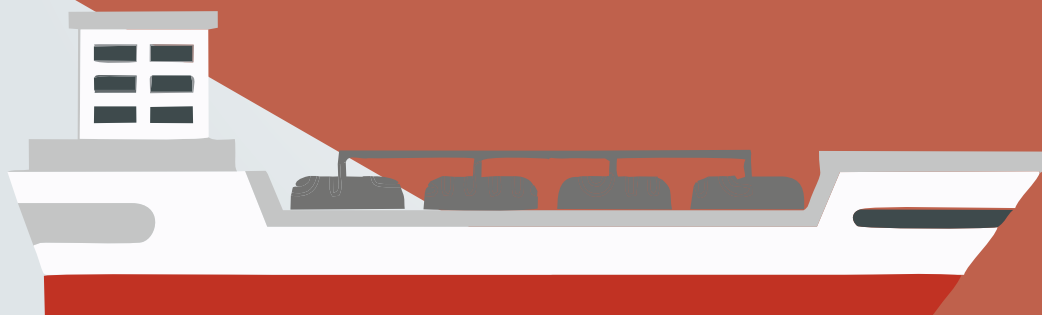
ISM Manager provides an international standard for the safe management and operation of ships. ISM Manager is specifically developed for the shipping industry to fulfil the Safety Management System requirements of the ISM Code.

It simplifies the storage, updating and tracking of all documentation required by the ISM Code. Moreover it enables monitoring of event, non-conformities, incidents and accidents and provides full audit trail of the corrective actions and safety meeting minutes, while providing complete statistical and trend analysis.

ISM Manager is designed to handle controlled documentation creation, editing and approval. It allows version control of ISM documentation to be created based on a company-defined structure per vessel. Approval is based on a company-defined workflow, which allows documents to be distributed through the ISM Manager to the responsible persons.

The supported ISM Manager features are:

- Active calendar
- Automatic notification alerts and warnings
- Certificates and files
- Vessel Inspection, internal & external audits' records
- Statistics
- Pending tasks
- Port state control & vetting records
- MOU description & country member recording
- Monitoring company changes to operating conditions or procedures
- Risk assessment
- Meeting
- Drills
- Critical situations monitoring
- Document control & file management
- Key Performance Index and other customized reports





OPERATIONS MANAGER

Let your customers use a flexible & powerful reporting tool that fully meets their requirements.

Operations Manager is the ultimate reporting tool that provides the shipboard and office personnel for keeping track of all Shipping and Port Operations. The biggest advantage of Operations Manager is that the Reporting Tool is easily customizable according to our Clients' reporting requirements. Reporting is completed through SBS Manager and sent by direct email and/or through the SBS auto-sync functionality. Reports are easily accessed for full evaluation and comparison across the fleet.

The Shipping Operations Application involves reporting all Ships Transits (Arrival, Departure, and Noon Reports) and all kind of Port Activities providing full and detailed Reports related to Statement of Facts, Cargo Loading/Discharging, Bunkering, Repairs and other related Operations, customized to the specific vessel type.



Operations Manager is fully integrated with the Accounting, Budgetary and Quality functionalities, providing the shore Operations team valuable information on the fleet, cargo and port statistics. Additional features of Operations Manager include:

- Automatic notification alerts and warnings
- Certificates and files
- Port Info
- Historical data
- Benchmarking of Performance Monitoring
- Voyage Calculator and Final Voyage Results can be recorded on Accounts
- Statistical data (Performance, Consumption and Commercial stats)
- Seamless integration with PMS, ISM and Accounting Managers
- Easy-to-use on board
- Key Performance Index and other customized reports





CREW MANAGER

Gain from an effective and reliable system for your crew data management.

Having access to quality seafarers is increasingly challenging for all shipping companies and operators. Crew Manager allows you to have a clear view of your crew data and history and manage personnel assignments. With crew details, evaluation experience and certificates all stored in the system it enables you to ensure that your vessel is appropriately manned and demonstrate this to potential customers - a critical factor in winning business. Crew Manager is a flexible, user-friendly and fully customizable management tool, that ensures significant efficiency gains leading to increased productivity and reduced operating expenses.

The supported Crew Manager features are:

- Active calendar
- Automatic notification alerts and warnings
- Certificates and files
- Medical histories
- Training records
- Crew planners
- Seafarer services
- Crew appraisals
- KPIs and customized reports
- MGA payrolls

By using SBS Crew Manager Suite our customers will be able to gain an ongoing, measurable control of the Crew Department, resulting in better performance and continuous improvement of the company's operational effectiveness.

SBS Crew Manager offers a unique structure to assist you achieve full GDPR Compliance.





PMS MANAGER

Optimize the lifecycle maintenance of your vessels.

PMS Manager allows ship owners and operators to actively track maintenance at user-defined intervals or according to manufacturer and Classification Society requirements. The maintenance, planning and scheduling along with its corresponding documentation, is documented and recorded through the PMS Manager functionality, providing a reliable and an efficient reporting toolset.

All technical historical data and performance records are easily accessible at a click of the button to:

- Technical managers at the office
- Superintendent and Marine Engineers at remote locations
- Chief Engineers onboard the vessel.

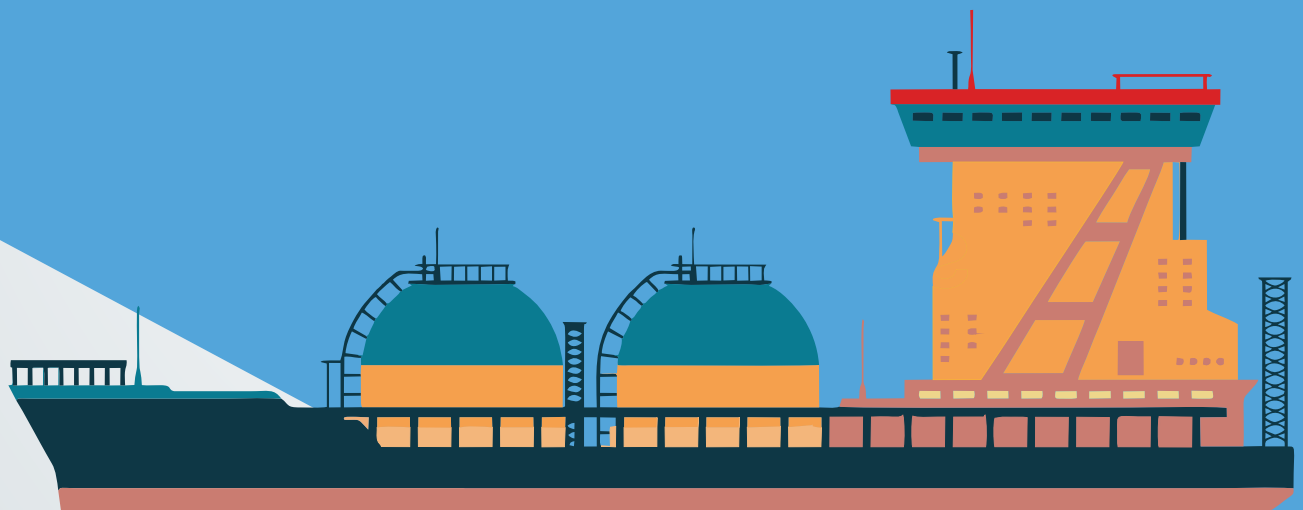
The smart-grid format allows for immediate assessment of vessel machinery allowing Technical Managers to optimize and accurately plan a vessels maintenance system. Our SBS Active Calendar combined with automated e-mail notifications become an indispensable tool for crew managers. User-defined notifications with 3-phase alert escalations provide immediate feedback on the status of items ensure that the vessel never miss overdue items.

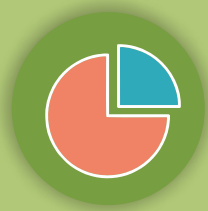


The features of PMS Manager include:

- Active calendar
- Automatic notification alerts and warnings
- Condition monitoring and maintenance scheduling for machinery, equipment & parts
- Vessel machinery running hour logs with diagram display and customizable algorithms
- KPIs and customized reports
- Intuitive databases of all certificates and files
- Electronic equipment lists
- Active Inventory Management
- Machinery specification databases
- Maintenance & calibration guides
- Key Performance Index and other customized reports

I2QS's PMS Manager meets all class type requirements and is certified by NKK Class.





PURCHASING MANAGER

Place your orders quickly, easily and seamlessly.

Purchasing Manager gives you the ability to create and manage purchase orders with a minimum of clicks, save templates for quick restocking, import and send RFQs and easily update these with relevant pricing and quantities. Purchasing Manager is fully integrated with Accounting Manager allowing full budgetary control and additional quality functionalities, providing top end solution for purchasing operations. The ordering process is fast and consistent.

Purchasing Manager meets the fundamental procurement cycle which will rapidly increase your purchasing department performance in:

- Requisitions
- Evaluation
- Orders
- Deliveries
- Invoicing



The supported Purchasing Manager features are:

- Inventories
- Live requisition monitoring
- Requisition budgetary status checks
- Requisition thresh-hold budgetary or duplication notifications
- Purchasing cross-fleet comparative data
- Active calendar with Automatic notification alerts and warnings
- Certificates and files
- Historical data
- Statistical data (Consumption stats, Price lists per vendor per port)
- Seamless integration with PMS and ISM and Accounting Managers
- User-friendly onboard-crew interface
- Key Performance Index and other customized reports



MGA MANAGER

Eliminate errors and get multiple benefits while administrating your tasks in a stress-free environment.

Masters General Account (MGA) Manager makes quick and simple for Masters at sea to manage shipboard payroll and other administrative tasks using a consistent methodology, meaning less stress all-round. MGA Manager import/export unique utility means your shore-based accounting staff can do all the groundwork for preparing the Master's account, reducing the administrative burden for the Masters and leaving them more time to get on with running the ship.

An error-free, clear Portage Bill makes your Masters' and shore-based staff life much easier, by minimizing time lost checking mistakes, correcting oversights and chasing information back and forth between shore and ship. A great deal of attention has been paid to making Masters General Account as practical and usable as possible for your Masters and accounting staff. MGA Manager can export every report in a Microsoft Excel© format, meaning you won't need to spend time and money training staff to use new software. Datasheets are presented in shipping industry language and familiar formats your staff will understand.





The supported MGA Manager includes a series of effective features, such as:

- Active calendar
- Automatic notification alerts and warnings
- Seafarer contracts
- Greek books
- Cash statements
- Account information details
- Key Performance Index and other customized reports
- MGA payrolls



ACCOUNTING MANAGER

Bring all of your company's functions together, under a customizable, intergrated platform.

Why choose Accounting Manager? Because it is so much more than just another Accounting software package! It ensures that the Organization's accounting procedures are integrated into the Management System. The Accounting Manager is also a necessary tool for senior Management. By accumulating information from each of the other SBS Modules, the Accounting Manager ties together the company's operational activities and financial processes under a united BOSS platform.

Active budget management and cost-control are easily monitored and maintained by Heads of Department, reporting to the senior Management through customized reporting schedules.

Comprehensive Cash Management and Accounting Schedules are controlled through the unified BOSS platform and can be exported into any format required for financial reporting, including MS Excel[®].

Through the Active Calendar management:

- Creditor schedules become automated from receipt of invoices
- Through the integrated 3-phase escalation alerting functionality, time-sensitive payment planning becomes available to all levels of accounting personnel.

Accounting manager has been built specifically to cater for the needs of the Shipping Industry incorporating all the key functions, and can be customized according to the type of shipping business.

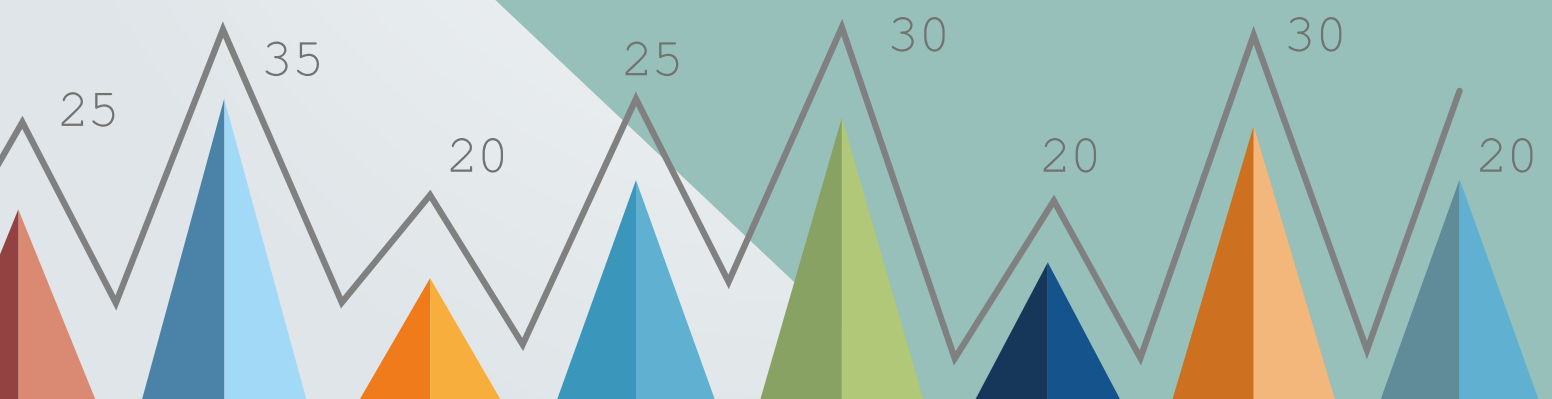


40



The features of the Accounting Manager include:

- Budgetary and Cost-Controls
- Cash Flow Management
- Cash Flow Reports
- Group Management Accounts
- Multi-Company Accounts
- Multi-Currency Accounts
- Cost Accounting and Debit Note Creation Functionality
- Integration with Voyage and Chartering Accounts
- Integration with Operations and Disbursements Accounts
- Integration with Crew & MGA Managers for final Control and Cost Accounting
- Integration with the Purchasing Module and Inventory Control
- ISM and PMS trigger expenses through the Purchasing Module and final Cost Accounting
- Control and Approval of Expenses and Accounts is continuously tracked
- File and Document Management





ASK
For a Live Demo / Presentation



VISIT
www.i2qs.com



CALL
+ 30 210 6781090



MAIL
contact@i2qs.com



MEET
2 Eptanissou Str.
152 31 Chalandri,
Athens, Greece



Certificate No. TA12488M



Inspire Implement Improve